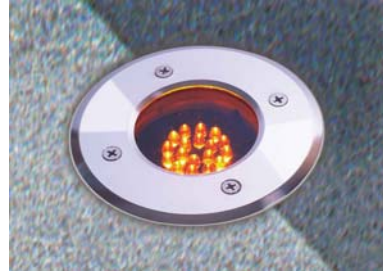




SL-601

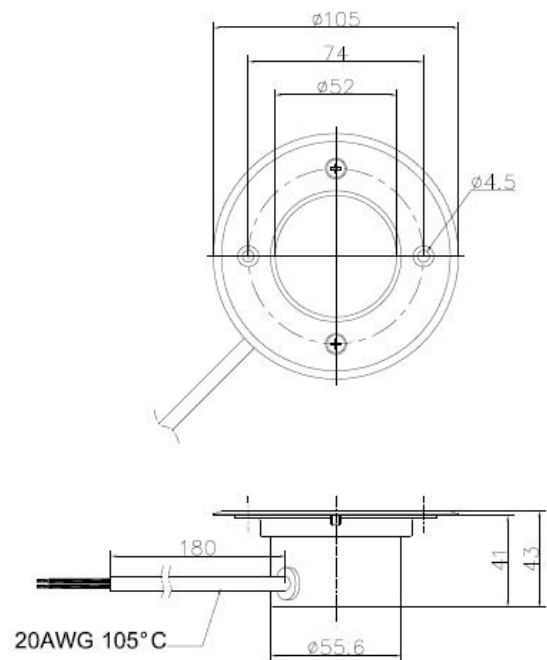
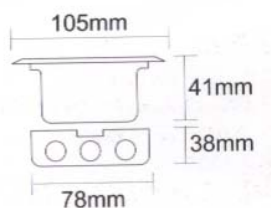


I. FEATURE

- Available in a selection of LED light colors
- Compatible with embedded octagonal box, and easy use and installation
- Standard E-27 base and no need of modification
- Standard double-heart circuit to against UV
- Low voltage operation at 90V-240V AC
- The weight is only 260grams
- Use the material of stainless steel, and waterproof solidified cream to conduct heat
- Beam angle at 30 degrees
- Suitable for outdoor use, because it can operate in variable weather and brutal environment
- Safety Standard: CE
- No UV

II. Typical Applications

- Architectural lighting
- Underground lighting
- Landscape and garden lighting
- Sidewalk and underground lighting
- Traffic signal lighting



III. SPECIFICATION

- Operating Voltage: 90~240V AC
- Reserve of 30cm double-heart circuit
- Use the material of stainless steel, and waterproof solidified cream to conduct heat
- Install 18 PCS High Power LED ,keep cool and get long longevity
- Operating Temp: -10~40℃

Power	Led Power	Beam Angle	Color	Part No.
2.5W	1.3W	30°	Red	CD-8030-1-R
2.5W	1.3W	30°	Green	CD-8030-1-G
2.5W	1.3W	30°	Blue	CD-8030-1-B
2.5W	1.3W	30°	Amber	CD-8030-1-A
2.5W	1.3W	30°	Warm White	CD-8030-1-WW
2.5W	1.3W	30°	White	CD-8030-1-W

Photometric

Ambient Operating Temperature, Tj = 25o

Color	Dominant Wavelength		Half-Width (nm)
	Min. (nm)	Max. (nm)	
Red	620	630	25
Green	520	530	35
Blue	460	470	25
Amber	585	595	25
White	6000K	7000K	
Warm White	2800K	3800K	