



SL-602

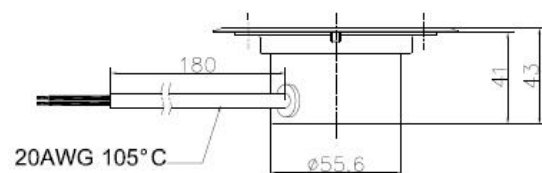
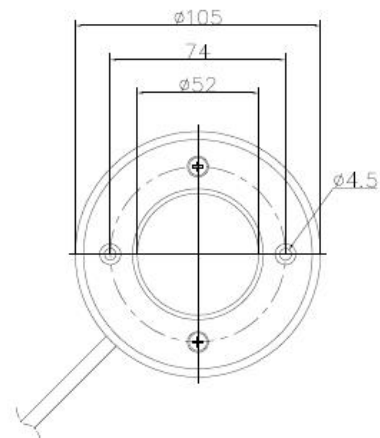
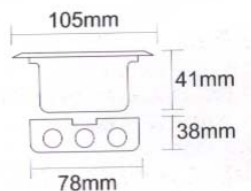


I. FEATURE

- Available in a selection of LED light colors
- Available in a selection of clear glass or foggy glass
- Compatible with embedded octagonal box, and easy use and installation
- Standard double-heart circuit to against UV
- Low voltage operation at 90V-240V AC or 12V DC/AC:
- The weight is only 260grams
- Use the material of stainless steel, and waterproof solidified cream to conduct heat
- Beam angle at 120 degrees
- Suitable for outdoor use, because it can operate in variable weather and brutal environment
- Safety Standard: CE
- No UV

II. Typical Applications

- Architectural lighting
- Decoration lighting
- Landscape and garden lighting
- Sidewalk and underground lighting
- Traffic signal lighting



III. SPECIFICATION

Operating Voltage: 90~240V AC or 12V DC/AC

Reserve of 30cm double-heart circuit

Use the material of stainless steel, and waterproof solidified cream to conduct heat

Heat sink: Aluminum model

Operating Temp: -10~40°C

High power LED which be controlled by constant current driver

Power	Led Power	Lumi	Beam Angle	Color	Part No.
3.0W	1.0W	45-55	120° θ	Red	CD-8029-R
3.0W	1.3W	45-55	120° θ	Green	CD-8029-G
3.0W	1.3W	11-15	120° θ	Blue	CD-8029-B
3.0W	1.0W	35-45	120° θ	Amber	CD-8029-A
3.0W	1.3W	65-75	120° θ	Warm White	CD-8029-WW
3.0W	1.3W	45-55	120° θ	White	CD-8029-W

Photometric

Ambient Operating Temperature, Tj = 25°

Color	Dominant Wavelength		Half-Width (nm)
	Min. (nm)	Max. (nm)	
Red	620	630	25
Green	520	530	35
Blue	460	470	25
Amber	585	595	25
White	6000K	7000K	
Warm White	2800K	3800K	

Version: CINDI CD-8029 SPEC 990630