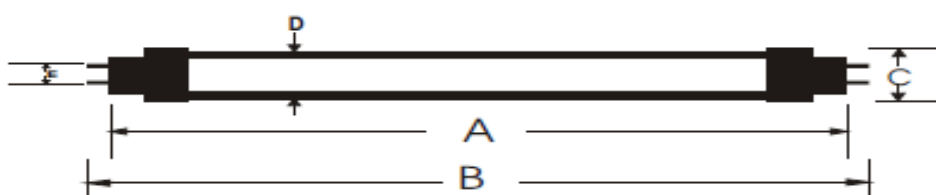




1. Features

- Used as a replacement for the traditional fluorescent tubes
- Wide range illumination
- Ultra-thin aluminum base which provide good ability of heat conduction
- Low power consumption
- High luminous efficiency > 95
- Low voltage operation at DC 24V which is safer and steadier
- Energy saving (saving 40~60%, compare to the traditional fluorescent tube)
- No flicker and high safety
- Non-UV or IR radiation

2. Dimension



	A	B	C	D	E
2 feet tube	579mm	592mm	27mm	25mm	G13
2.1 feet tube	590mm	603mm	27mm	25mm	G13
4 feet tube	1197mm	1209mm	27mm	25mm	G13

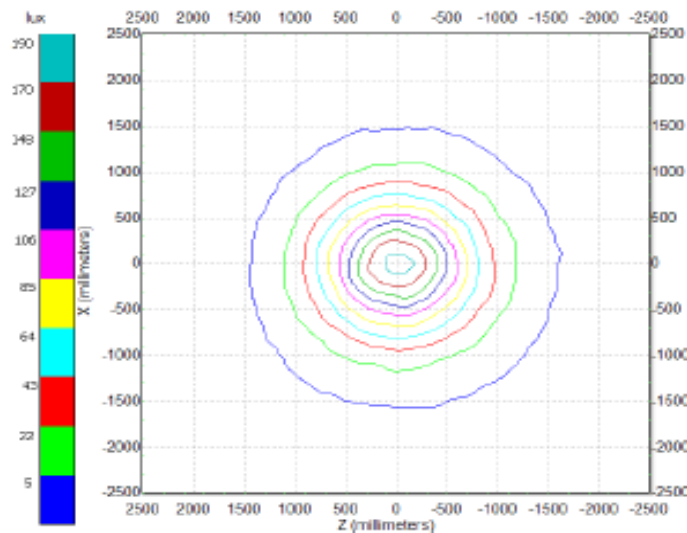
3. Electrical Specification

	2 feet & 2.1feet Tubes	4 feet Tube
Input	DC:24V	
Efficiency	>95%	
Power protection	OVP,OTP,OPP,short current protection	
ESD protection capability	±2KV(HBM)	
DC terminal voltage	24v	
Rated current	320mA	680mA
Power consumption	8W	17W
LED quantity	112ea	238ea
Brightness(Lumi)	610 lm	1236 lm

4. Optical Specification

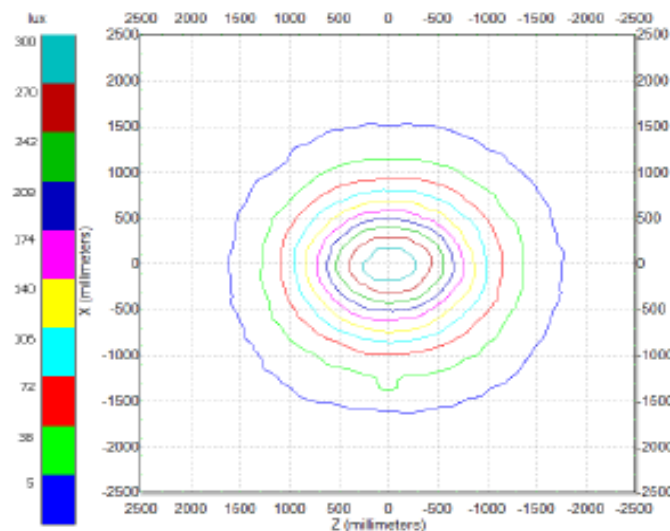
	8W	17W
Color temperature	4000~4500K 6000~6500K	
Beam angles	120±10°	
Color Shift	+0.00222duv	
C.R.T	> 70	
6000K illumination(1m)	160~190 Lux	250~300 Lux
MTBF@25°C	> 25000hrs	

2~2.1feet (8W)



Illuminance at a Distance		
	Center Beam LUX	Beam Width
1.0 m	170 LUX	2.6m 5.3m
2.0 m	40 LUX	5.1m 10.6m
3.0 m	18 LUX	7.7m 15.8m
4.0 m	10 LUX	10.2m 21.1m
5.0 m	5 LUX	12.8m 26.4m
6.0 m	2 LUX	15.3m 31.7m
<div style="display: flex; justify-content: space-between;"> ■ Vert. Spread : 103.9° ■ Horiz. Spread : 138.5° </div>		

4feet (17W)



Illuminance at a Distance		
	Center Beam LUX	Beam Width
1.0 m	295 LUX	2.6m 5.2m
2.0 m	85 LUX	5.2m 10.5m
3.0 m	35 LUX	7.8m 15.7m
4.0 m	20 LUX	10.4m 21.0m
5.0 m	10 LUX	13.0m 26.2m
6.0 m	7 LUX	15.6m 31.5m
<div style="display: flex; justify-content: space-between;"> ■ Vert. Spread : 104.7° ■ Horiz. Spread : 138.3° </div>		