



SL-801 (AR-111 Module)

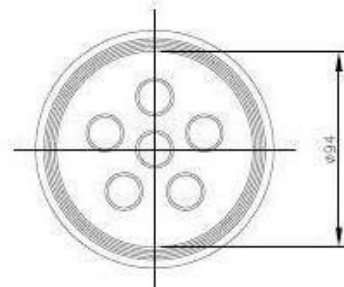
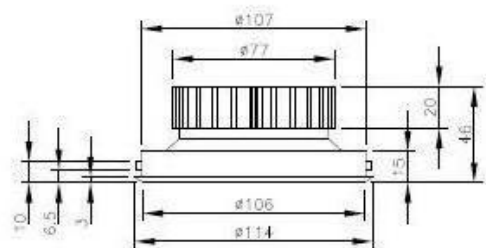
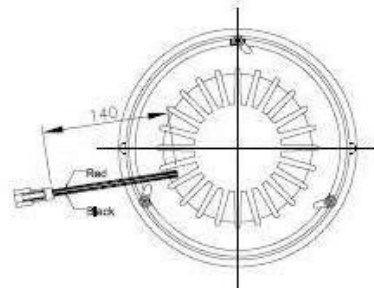


I. Feature

- Accessible in a selection of LED light colors
- Compatible with AR111 lighting , easy installation and application
- Standard double-heart circuit to against UV
- Light and delicate appearance
- Low voltage operation at 90V-240V AC
- Aluminum material which provides excellent thermal performance
- Beam angle at 30 degrees
- Satisfy the indoor lighting, as bright as Energy Saving Bulb
- Safety standard: CE
- No UV

II. Typical Applications

- Architectural lighting
- Boutique lighting
- Landscape lighting
- Indoor lighting
- Exhibition lighting



III. SPECIFICATION

- Operating Voltage: 90~240V AC
- Reserve of 30cm double-heart circuit
- Heat Sink: 100% Aluminum model, and stainless coil
- Install 6 PCS High Power LED ,keep cool and get long longevity
- Operating Temp: -10~40°C

Mr-16 Power	Led	Lumi	Bean Angle	Color	Part No.
7.5W	5.5W	170-330	30°	Red	SL-801-R
10W	7.8W	300-330	30°	Green	SL-801-G
10W	7.8W	60-90	30°	Blue	SL-801-B
7.5W	5.5W	210-240	30°	Amber	SL-801-Y
10W	7.8W	480-540	30°	Warm White	SL-801-WW
10W	7.8W	510-600	30°	White	SL-801-W

Photometric

Ambient Operating Temperature, Tj = 25o

Color	Dominat Wavelength		Half-Width (nm)
	Min. (nm)	Max. (nm)	
Red	620	630	25
Green	520	530	35
Blue	460	470	25
Amber	585	595	25
White	6000K	7000K	
Warm White	2800K	3800K	